



LED High-Bay Series A



Product features

- Light and small structure greatly shorten the packing space and save the freight;
- A6063 die-casting aluminum radiator, with air duct design principle of both inside and outside ventilation, and better heat dissipation performance;
- Waterproof IP65;

- Use high quality LED and power supply, to ensure the product reliability and life expectancy;
- Multiple-choices brand LED and power supply;
- More cost-effective than similar products to meet customers various needs.

Dimension



Rings

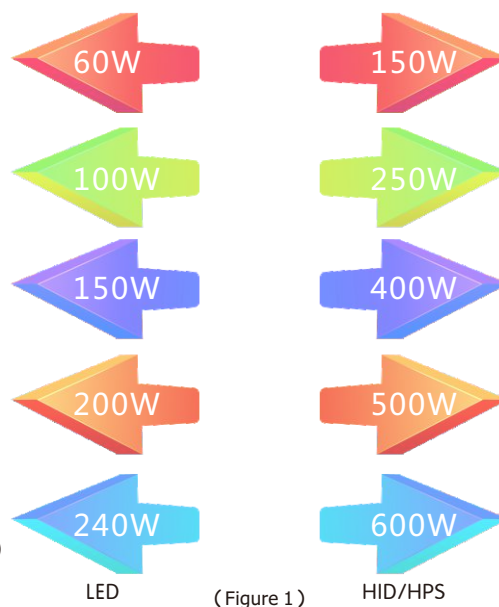
Model No.	H 1 (mm)	H 2 (mm)	Ø (mm)	Rings
NHLED301B-60W	185	135	280	M10
NHLED301B-100W	185	135	280	M10
NHLED301B-150W	187	138	340	M10
NHLED301B-200W	196.5	147	400	M12
NHLED301B-240W	196.5	147	400	M12

Product Application Instructions

- Compared to traditional halogen high bay, LEDs will be more energy saving. (Figure 1)。
- Reliable Inventronics & Meanwell Series of driver or option, and the drivers can be 0-10V,PWM Dimming。
- Installation Methods: Screw Lifting, Hanging chain, Bracket.All accessories will be provided according to customers requirements。
- Optimum installation height : 8-15 meters。
- Waterproof IP65。

Specification / Product Parameters

- **Input voltage:**90~305VAC
- **Frequency:**50/60Hz
- **Lumen Efficacy:**130/140 LM/W
- **perating temperature:**-30°~+40°
- **Power factor:** > 0.95
- **Beam angle:**60°, 90°,110°
- **THD:**THD <20%(220~240V,THD <10%)
- **warranty :**50000H

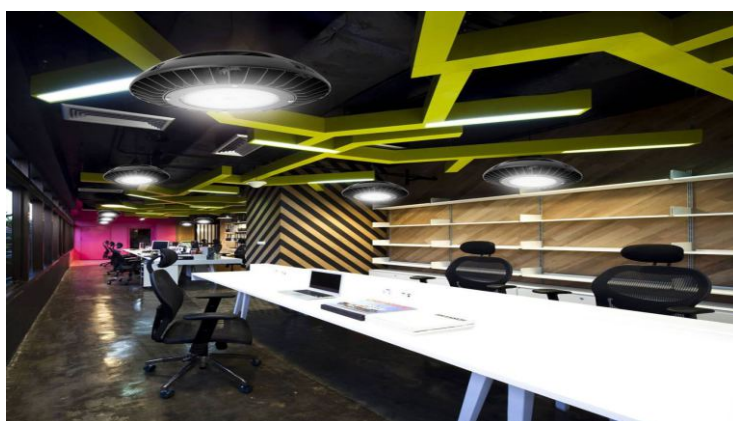
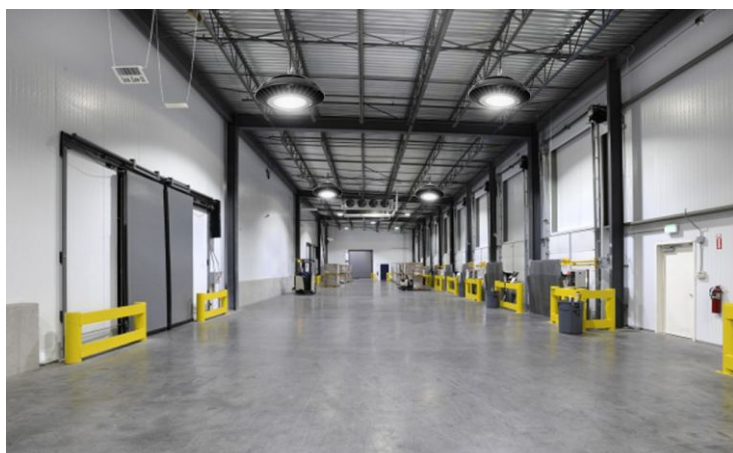
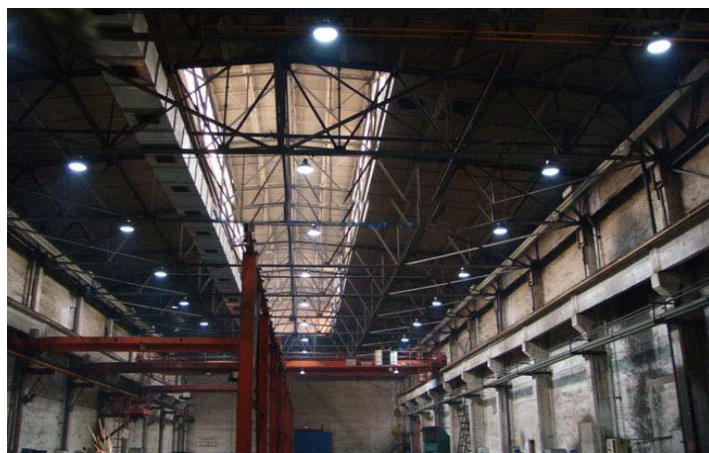


Model No	Power (W)	CCT (K)	Lumen Efficacy (LM/W)	Lumens (LM)	CRI	Power factor	Beam angle	Driver Brand	SDCM	authentication
NHLED301B-60W	60	3000-6500	140	8400	>80	>0.95	60°,90°,110°	MEAN WELL	≤5	UL/TUV (Only driver)
NHLED301B-100W	100	3000-6500	130	13000	>80	>0.95	60°,90°,110°	INVENTRONICS	≤5	UL/TUV (Only driver)
NHLED301B-150W	150	3000-6500	130	19500	>80	>0.95	60°,90°,110°	INVENTRONICS	≤5	UL/TUV (Only driver)
NHLED301B-200W	200	3000-6500	140	28000	>80	>0.95	60°,90°,110°	INVENTRONICS	≤5	UL/TUV (Only driver)
NHLED301B-240W	240	3000-6500	130	31200	>80	>0.95	60°,90°,110°	INVENTRONICS	≤5	UL/TUV (Only driver)

Notice: The above lumen efficiency is for color temperature >4000K,3000-3500K will be lower.

Product Application

Widely used in industrial and commercial lighting like factory workshop, warehouse, logistic center, exhibition hall, stadium, ore yard, toll station, gas station, supermarket &farmers'market.



Installation Instructions

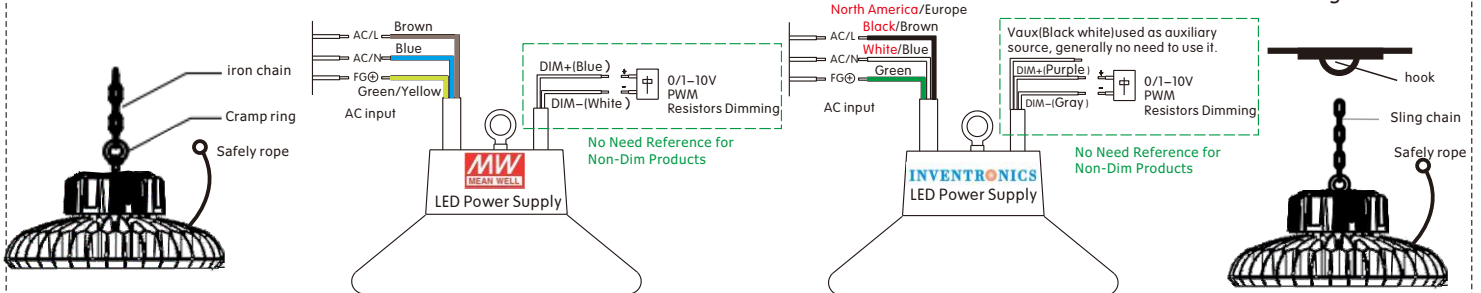
Except MEAN WELL and INVENTRONICS ,other brand LED driver can be provided as per customer's needs.

Install with Iron Chain

Step 1: Screw the chain in to the lamp

Step 2: Connect the wire

Step 3: Hang up the Iron chain and the ring to the hook.

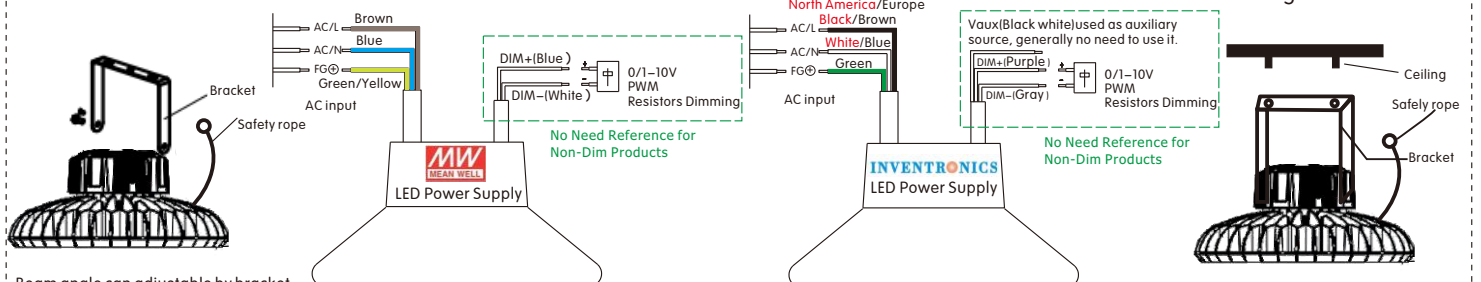


Bracket installation Figure :

Step 1 : Install the bracket

Step 2: Connect the wire

Step 3 : Mounting bracket to the ceiling .



Beam angle can adjustable by bracket :

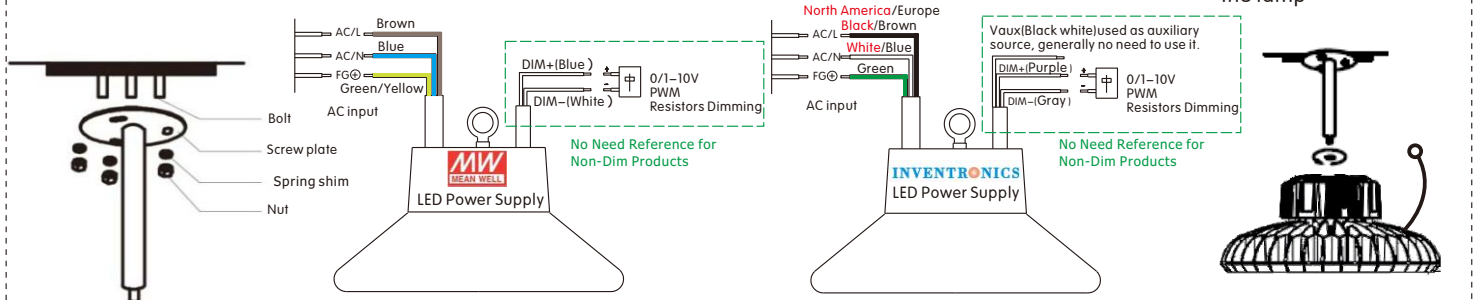
30° ,60° ,90° ,120° ,150°

Boom installation Figure :

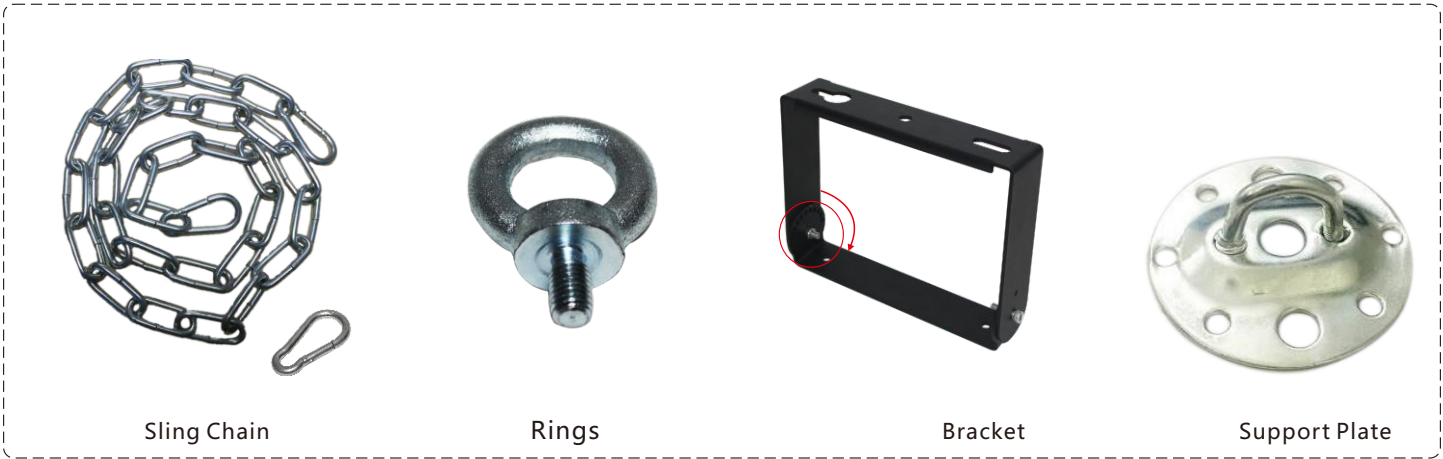
Step 1 : Install the boom to the ceiling

Step 2: Connect the wire

Step 3: Tightening the boom and the lamp

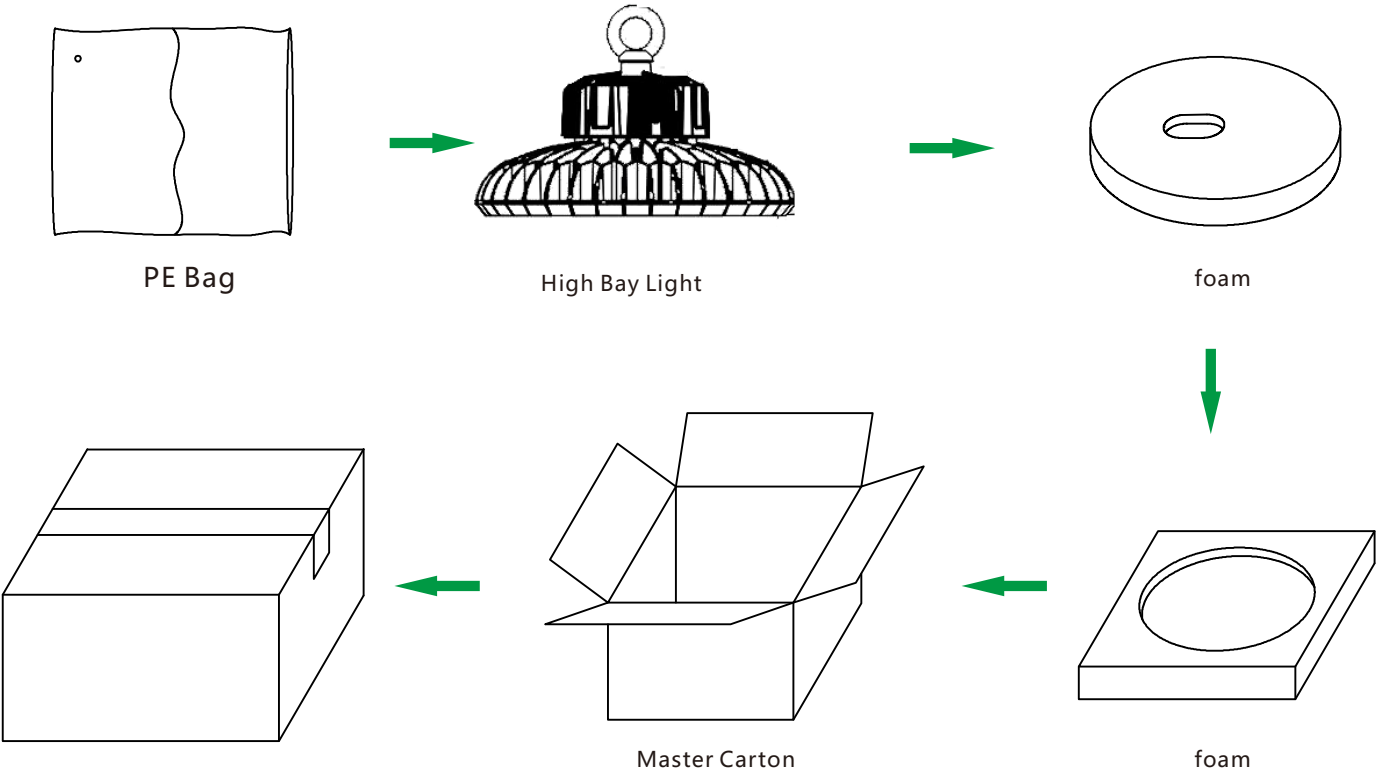


Accessories



Remarks, that's optional accessories. Please select as per your installation needs.

Packaging



Product Name	Net Weight(kg)	Gross Weight(kg)	Transport volume weight	Carton Size(mm)
NHLED301B-60W	2.5	3.04	4.42	L330*W335*H200
NHLED301B-100W	3.28	3.82	4.42	L330*W335*H200
NHLED301B-150W	4.95	5.9	5.41	L385*W380*H185
NHLED301B-200W	7.22	8.36	8.88	L460*W460*H210
NHLED301B-240W	7.22	8.36	8.88	L460*W460*H210

No.	Packing List
①	High Bay Light
②	Safety Rope (Standard)
③	Rings (Standard)
④	Bracket(Optional)
⑤	Sling Chain (Optional)
⑥	Support Plate (Optional)