



## GRONINGEN

This flexible LED solution can be used in variety of application with IP20 and IP65 design, and two positioning in project and consumer.

### Features

- SMD 2835/ 5050 LEDs
- 60 LEDs/meter
- IP20 and IP65 available
- IP44 and IP67 can be customer made
- DC 12V and DC 24V available
- Single color: 2700K, 3000K, 4000K, 6500K, red, green, blue and yellow
- RGB color
- Project version(30,000h):
  - 2835 4.8w 350 lm
  - 5050 14.4w 900 lm
- Economic version(20,000h):
  - 2835 4.8w 350 lm
  - 5050 14.4w 700 lm

### Benefits

- More light, less powerconsuming. Easy in length adjustable just by cutting it.
- A variety of lumen output, colors and IP ratings make it suitable for almost any application where maybe limited.
- A full range of accessories available ensuring easy and convenient installation.
- Match with NVC IP20 or IP65 driver- NLED-DV110\* series, safe and stable.



## Structure and details



**SMD5050**  
Higher power  
Higher lumen output  
Higher cost



**SMD2835**  
Best light area  
Same performance  
Competitive price



IP20 version, install  
with 3M adhesive  
tape on the back



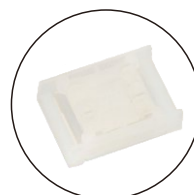
NVC logo on FPC  
better workmanship



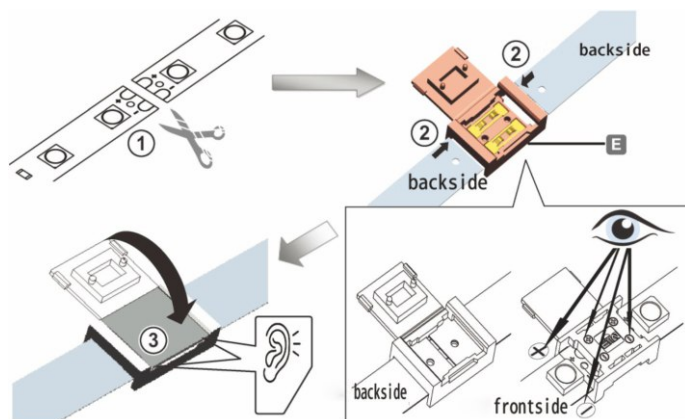
CRI 80+, better color  
rendering to creates  
pleasant and  
comfortable spaces in  
a soft and gentle way



IP65 version with  
waterproof silicon  
jacket, install with  
mounting clips.



Solder-free middle  
connector, easier  
installation



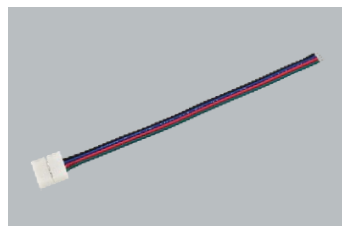
## Accessories



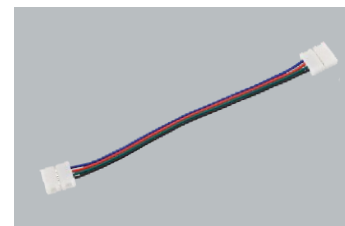
RGB infrared controller and remote



Power connector for single color (with/without plug)



Power connector for RGB color



Solderless RGB color middle connector



Heat shrink



Head cap  
End cap



Mounting clip



Solderless single color middle connector

## Applications



Residential lighting



cabinet lighting

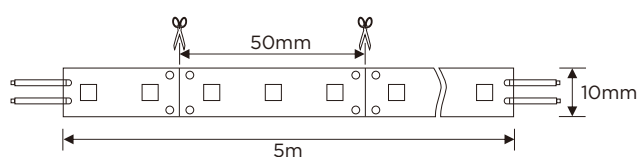


Indoor and outdoor cove lighting



Bar lighting

## Dimensions



Note: Same size for 2835, 5050, IP20 and IP65

## Ordering information

SAP code	Model	Wattages	Lumens	Color temp.	CRI	LED type	QTY/CTN	CTN Dimension
70071875	NGRO/4.8/2835/IP20/827	4.8W	350lm	SMD2835	80	SMD2835	50PCS	540x455x270
70071876	NGRO/4.8/2835/IP20/830	4.8W	350lm	SMD2835	80	SMD2835	50PCS	540x455x270
70071877	NGRO/4.8/2835/IP20/840	4.8W	350lm	SMD2835	80	SMD2835	50PCS	540x455x270
70071878	NGRO/4.8/2835/IP20/865	4.8W	350lm	SMD2835	80	SMD2835	50PCS	540x455x270
70071879	NGRO/4.8/2835/IP65/827	4.8W	350lm	SMD2835	80	SMD2835	50PCS	540x455x270
70071880	NGRO/4.8/2835/IP65/830	4.8W	350lm	SMD2835	80	SMD2835	50PCS	540x455x270
70071881	NGRO/4.8/2835/IP65/840	4.8W	350lm	SMD2835	80	SMD2835	50PCS	540x455x270
70071882	NGRO/4.8/2835/IP65/865	4.8W	350lm	SMD2835	80	SMD2835	50PCS	540x455x270
70071893	NGRO/14.4/5050/IP20/827	14.4W	900lm	SMD5050	80	SMD5050	50PCS	540x455x270
70071894	NGRO/14.4/5050/IP20/830	14.4W	900lm	SMD5050	80	SMD5050	50PCS	540x455x270
70071895	NGRO/14.4/5050/IP20/840	14.4W	900lm	SMD5050	80	SMD5050	50PCS	540x455x270
70071896	NGRO/14.4/5050/IP20/865	14.4W	900lm	SMD5050	80	SMD5050	50PCS	540x455x270
70071897	NGRO/14.4/5050/IP65/827	14.4W	900lm	SMD5050	80	SMD5050	50PCS	540x455x270
70071898	NGRO/14.4/5050/IP65/830	14.4W	900lm	SMD5050	80	SMD5050	50PCS	540x455x270
70071899	NGRO/14.4/5050/IP65/840	14.4W	900lm	SMD5050	80	SMD5050	50PCS	540x455x270
70071900	NGRO/14.4/5050/IP65/865	14.4W	900lm	SMD5050	80	SMD5050	50PCS	540x455x270
70071901	NGRO/14.4/5050/IP20/RGB	14.4W	—	SMD5050	—	SMD5050	50PCS	540x455x270
70071902	NGRO/14.4/5050/IP20/R	14.4W	—	SMD5050	—	SMD5050	50PCS	540x455x270
70071903	NGRO/14.4/5050/IP20/G	14.4W	—	SMD5050	—	SMD5050	50PCS	540x455x270
70071904	NGRO/14.4/5050/IP20/B	14.4W	—	SMD5050	—	SMD5050	50PCS	540x455x270
70071905	NGRO/14.4/5050/IP20/Y	14.4W	—	SMD5050	—	SMD5050	50PCS	540x455x270
70074192	NGRO/14.4/5050/IP65/RGB	14.4W	—	SMD5050	—	SMD5050	50PCS	540x455x270
70074214	NGRO/14.4/5050/IP65/R	14.4W	—	SMD5050	—	SMD5050	50PCS	540x455x270
70074214	NGRO/14.4/5050/IP65/G	14.4W	—	SMD5050	—	SMD5050	50PCS	540x455x270
70074215	NGRO/14.4/5050/IP65/B	14.4W	—	SMD5050	—	SMD5050	50PCS	540x455x270
70074216	NGRO/14.4/5050/IP65/Y	14.4W	—	SMD5050	—	SMD5050	50PCS	540x455x270
70072843	NGRO/4.8/EC/2835/IP20/827	4.8W	350lm	SMD2835	80	SMD2835	50PCS	540x455x270
70072844	NGRO/4.8/EC/2835/IP20/830	4.8W	350lm	SMD2835	80	SMD2835	50PCS	540x455x270
70072845	NGRO/4.8/EC/2835/IP20/840	4.8W	350lm	SMD2835	80	SMD2835	50PCS	540x455x270
70072846	NGRO/4.8/EC/2835/IP20/865	4.8W	350lm	SMD2835	80	SMD2835	50PCS	540x455x270
70072847	NGRO/4.8/EC/2835/IP65/827	4.8W	350lm	SMD2835	80	SMD2835	50PCS	540x455x270
70072848	NGRO/4.8/EC/2835/IP65/830	4.8W	350lm	SMD2835	80	SMD2835	50PCS	540x455x270
70072849	NGRO/4.8/EC/2835/IP65/840	4.8W	350lm	SMD2835	80	SMD2835	50PCS	540x455x270
70072850	NGRO/4.8/EC/2835/IP65/865	4.8W	350lm	SMD2835	80	SMD2835	50PCS	540x455x270
70072851	NGRO/14.4/EC/5050/IP20/827	14.4W	750lm	SMD5050	80	SMD5050	50PCS	540x455x270
70072852	NGRO/14.4/EC/5050/IP20/830	14.4W	750lm	SMD5050	80	SMD5050	50PCS	540x455x270
70072853	NGRO/14.4/EC/5050/IP20/840	14.4W	750lm	SMD5050	80	SMD5050	50PCS	540x455x270
70072854	NGRO/14.4/EC/5050/IP20/865	14.4W	750lm	SMD5050	80	SMD5050	50PCS	540x455x270
70072855	NGRO/14.4/EC/5050/IP65/827	14.4W	750lm	SMD5050	80	SMD5050	50PCS	540x455x270
70072856	NGRO/14.4/EC/5050/IP65/830	14.4W	750lm	SMD5050	80	SMD5050	50PCS	540x455x270
70072857	NGRO/14.4/EC/5050/IP65/840	14.4W	750lm	SMD5050	80	SMD5050	50PCS	540x455x270
70072858	NGRO/14.4/EC/5050/IP65/865	14.4W	750lm	SMD5050	80	SMD5050	50PCS	540x455x270

## Accessories

SAP code	Model
70072859	Groningen mounting clip
70072861	Groningen head cap
70072860	Groningen end cap
70072862	Groningen heat shrink
70072863	Groningen solderless single color middle connector
70072864	Groningen solderless RGB color middle connector
70072865	Groningen power connector for single color(with plug)
70072866	Groningen power connector for RGB color
70073217	Groningen power connector for single color
70073076	Groningen RGB infrared controller and remote