



## NLED495A

An indoor linear lighting offers flexible combination and different shapes to deliver modern and simple lighting ambience.

### Technical details

- SMD LEDs
- Die-casting aluminium housing
- LED driver included
- Beam angle 120°
- LPW 70-120lm/W
- CCT 3000K/4000K/5700K
- Input voltage: 220-240V AC, 50/60Hz
- IP20, CRI>80, PF 0.9
- Rated life: 30000h
- T,Y cross, L splice fittings
- Certificated to CCC, CE, CB

### Benefits

- Rectangle design not only brings simple and fashion style, but also seamless connection between fixtures without dark spots.
- Easy installation and low maintenance cost.
- Flexible style design to realize space proper using .
- With aluminium housing and multiple options for connectors, it can be used in more applications than T8 tube and LED strips.
- High transmittance PMMA diffuser creates a high visual comfort and very uniform lighting distributions with low UGR.
- High quality aluminium body to prevent deformation, color fading and scratching.
- Multiple mounting options for versatile applications:  
Surface/suspension/recessed/wall mounted (can achieve boundless recessed)
- Body length, lighting style, power, and lumens etc. can be customized.

## Applications

Office building, school, hospital, shopping mall, hotel etc.

## Options

- Dimmers:** 0-10V dimming, DALI dimmer, CCT dimmable driver, emergency kit etc.
- Installation:** Ceiling mounted, sponder mounted, recessed mounted (can realize boundless recessed)
- Suspension mounted accessories to be ordered as separate parts
- Wattages:** 18W 1,300lm/24W 1,920lm/32W 2,500lm

## Structure and details



Hanger bolt + suspension wire



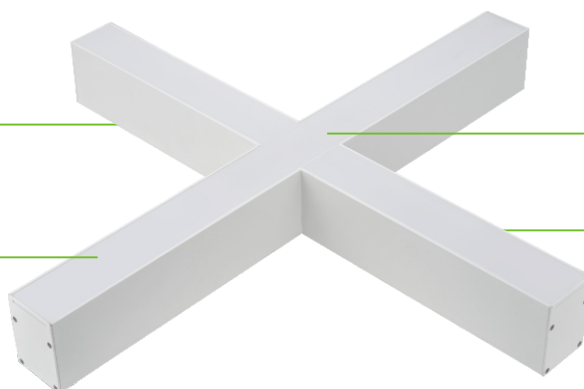
Connector



Installation buckle



High efficiency SMD LED light source of 120lm/W



Seamless connection



High transmittance PMMA diffuser creates a high visual comfort and uniform lighting distributions, very uniform lighting distributions with low UGR.

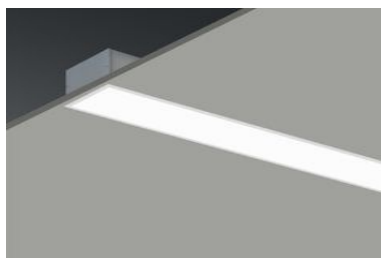


Easy connection between fixtures

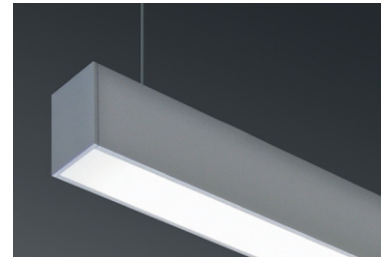
## Mounted ways



Surface mounted

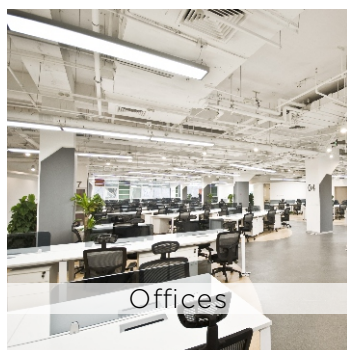


Recessed mounted

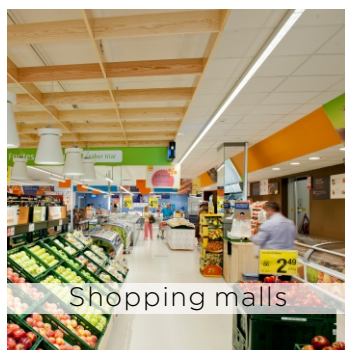


Suspended mounted

## Applications



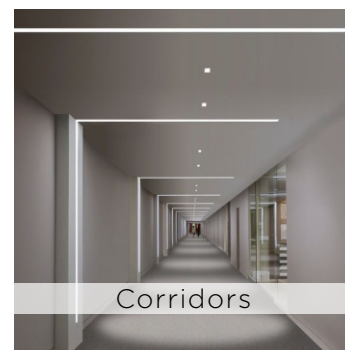
Offices



Shopping malls

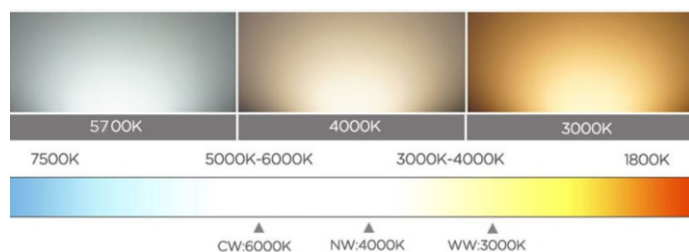


Gymnasiums

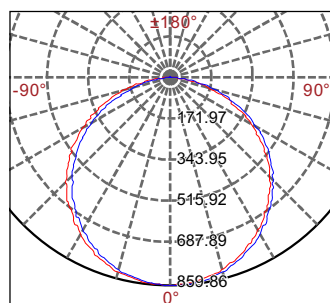


Corridors

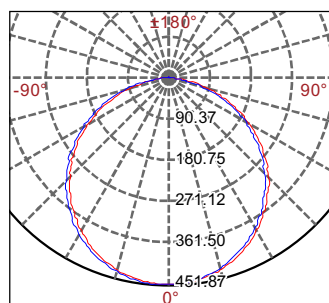
## Color temperature



## Photometric data

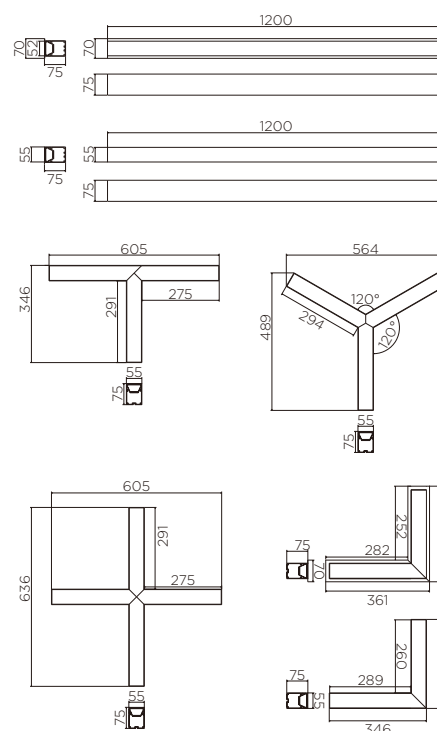


NLED495A/32/12/SF



NLED495A/CN/18/L/SF

## Dimension



## Ordering information

Model	Type	Lumens	Mounted ways	Color temp.	CRI	PF	QTY(pcs)/CTN	CTN Dimension (mm)
NLED495A 18W	L	1300lm	Surface Mounted	3000K/4000K/5700K	80	0.9	6	660x370x275
NLED495A 24W	T	1920lm	Surface Mounted	3000K/4000K/5700K	80	0.9	6	720x610x275
NLED495A 24W	Y	1920lm	Surface Mounted	3000K/4000K/5700K	80	0.9	6	590x530x515
NLED495A 32W	—	2500lm	Surface Mounted	3000K/4000K/5700K	80	0.9	6	1230x190x215
NLED495A 32W	+	2500lm	Surface Mounted	3000K/4000K/5700K	80	0.9	6	630x530x660
NLED495A 18W	L	1300lm	Recessed Mounted	3000K/4000K/5700K	80	0.9	6	660x370x275
NLED495A 32W	—	2500lm	Recessed Mounted	3000K/4000K/5700K	80	0.9	6	1230x190x260