

NTRLED321*

Low glare spotlight for track, surface or recessed installation



NTRLED321Q (Class II)
(Recessed mounted)



NTRLED321M (Class II)
(Surface mounted)



NTRLED321 (Class I)
(Track mounted)



APPLICATIONS

- Chain stores
- Fashion shops
- Museums
- Show rooms

OPTIONS

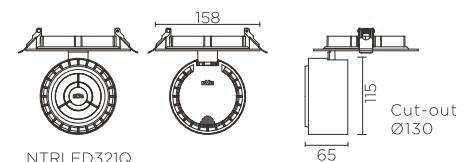
- **Colour:** Choice of black or semi-white
- **Beam angle:** Choice of 15°, 24° or 36°
- **Glare reduction ring:** Choice of Polycarbonate (PC) or die-cast aluminium alloy material
- For use with NVC 3-wire single circuit track as standard. For surface installation, add suffix M, for recessed installation add suffix Q.

CONSTRUCTION

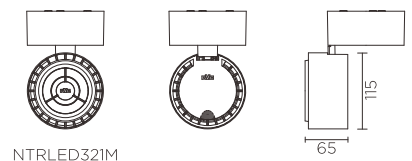
- Beam angle. Choice of 15°, 24° or 36°
- Body colour: Semi white
- Adjustable angle: horizontal 350°, vertical 90°
- Die-cast aluminium housing, powder coated
- Built-in constant current driver included
- Truck mounted version for use with 3-wire single circuit track
- Reflector Use ultrathin polycarbonate (PC) lens

TECHNICAL DETAILS

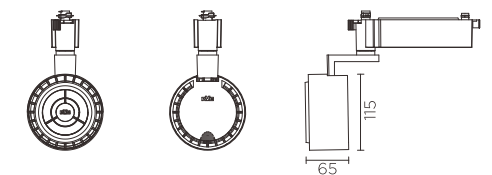
- COB LEDs
- SDCM < 3
- Rated life: 30,000 hours



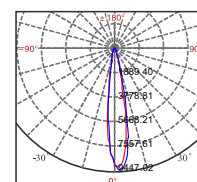
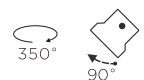
NTRLED321Q



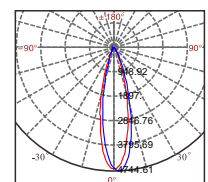
NTRLED321M



NTRLED321



NTRLED321 35W 15°



NTRLED321 35W 24°

Model	Colour temp.	Lumens	CRI	PF	Beam angle
NTRLED321 35W	3000K/3500K/4000K/5700K	1,800 lm	>90	>0.9	15°/24°/36°
NTRLED321M 35W	3000K/3500K/4000K/5700K	1,800 lm	>90	>0.9	15°/24°/36°
NTRLED321Q 35W	3000K/3500K/4000K/5700K	1,800 lm	>90	>0.9	15°/24°/36°

Structure and details

Quality driver

More comfortable and health lighting are provided, the ripple (fluctuation of the output) from the driver is less than 5%. Protect our vision health.



Good thermal design

The cooling fins, surrounded by an outer aluminium casing, encourage convection round the fitting, helping to keep the light source and the driver cool.

Stainless steel support arm

Press forming stainless steel support arm which have strong mechanical strength, is not easy to deform and slip.

Excellent glare control (II)

As an added anti-glare precaution, NTRLED321 comes complete with a glare reduction louvre. This is fitted over the front cover and further reduces the risk that a user will ever see directly into the light engine.

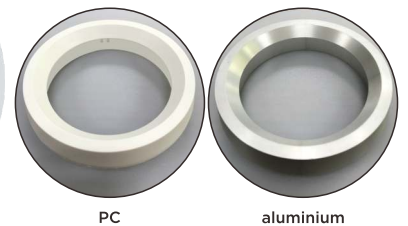
Track, recessed or surface installation

A well-designed retail store is uncluttered and simple, so the customers remain focussed on the goods for sale. The NTRLED321 helps designers achieve an uncluttered effect because they can use the same fitting installed in 3 different ways.



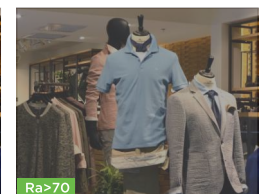
Excellent glare control (I)

The glare reduction ring increases the shielding angle so users are unlikely ever to see directly into the reflector and the COB light source. There are two types of material: polycarbonate (PC) and die-cast aluminium alloy for customer to choice.



High CRI (Ra>90)

CRI (Color Rendering Index) is an objective measure of the ability of a light source to reveal the colors of objects faithfully in comparison to a perfect light source. CRI plays a vital role in product display. The higher of CRI, the more faithful of the object colors.



Specifications in this leaflet are subject to change without notice. Please contact NVC Lighting Technology Corporation for detailed information.