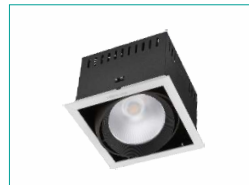
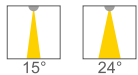


# NLED583\*

High power multiple down lights



## APPLICATIONS

- Shopping malls
- Showrooms
- Fashion shops
- Lobbies

## TECHNICAL DETAILS

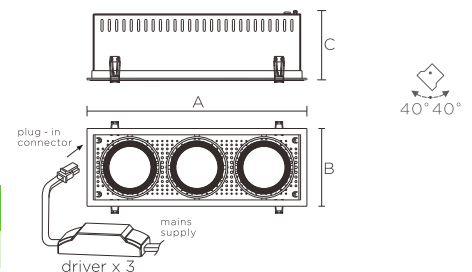
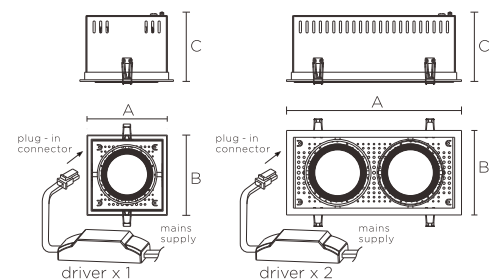
- COB LEDs
- SDCM < 3.5
- Rated life: 30,000 hours

## CONSTRUCTION

- Die-cast aluminium bezel with semi-white powder coated finish
- Steel outer housing with black painted finish
- Die-cast aluminium inner housing with black powder coated finish
- Adjustable angle 40°
- 1-head, 2-head and 3-head designs
- Separate driver for each head included

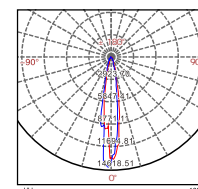
## OPTIONS

- **Beam angle:** Choice of 15°, or 24°

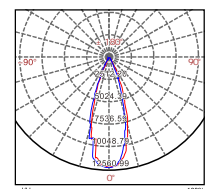


Watts	A	B	C	Cut-out
24W/35W	173	173	128	160x160
2x24W/2x35W	358	173	128	345x160
3x24W/3x35W	489	173	128	475x160

Model	Colour temp.	Lumens	CRI	PF	Beam angle
NLED5831 24W	3000K/3500K/4000K/5700K	2,100 lm	>90	>0.9	15°/24°
NLED5832 2x24W	3000K/3500K/4000K/5700K	3,500 lm	>90	>0.9	15°/24°
NLED5833 3x24W	3000K/3500K/4000K/5700K	5,000 lm	>90	>0.9	15°/24°
NLED5831A 35W	3000K/3500K/4000K/5700K	2,600 lm	>90	>0.9	15°/24°
NLED5832A 2x35W	3000K/3500K/4000K/5700K	5,100 lm	>90	>0.9	15°/24°
NLED5833A 3x35W	3000K/3500K/4000K/5700K	7,600 lm	>90	>0.9	15°/24°

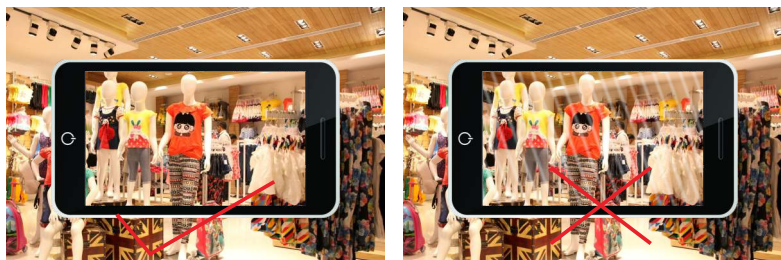


NLED5831 24W 15°



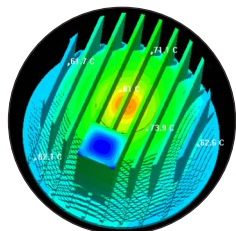
NLED5832A 70W 24°

# Structure and details



## Quality driver

More comfortable and health lighting are provided, the ripple (fluctuation of the output) from the driver is less than 5%. If required, OSRAM driver is also available for choice.



## Highly effective heat-sink

The design of the heat sink has been modelled and adjusted to deliver the optimum performance, keeping the COB LED cool, and extending its service life.

## Adjustable beam direction

The dual-ring construction allows for up to  $\pm 30^\circ$  of vertical adjustment in each of four directions – front, back, left and right.



## Multiple mounting methods

Most commonly the NLED583 is recessed, but it can also be suspended on cable or mounted on rods.



## Acrylic optical cylinder

Delivers a light beam with exceptional uniformity and also can increase the intensity of light.



## Precision designed reflector

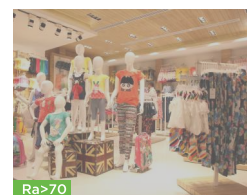
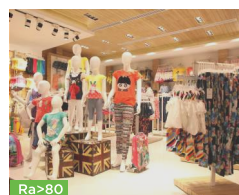
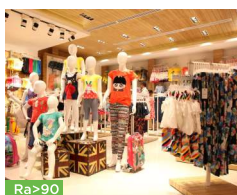
The reflector is made of spun aluminium with an electro-plated finish to achieve a high reflectivity.

## High quality outer housing

We have paid attention even to the manufacture of the outer housing to ensure it doesn't rust and that the paint won't peel off. The cold-stamped steel body receives an anti-oxidation treatment before painting so the fitting itself is not let-down by a poorly made outer housing

## High CRI (RA>90)

CRI (Color Rendering Index) is an objective measure of the ability of a light source to reveal the colors of objects faithfully in comparison to a perfect light source. CRI plays a vital role in product display. The higher of CRI, the more faithful of the object colors.



Specifications in this leaflet are subject to change without notice. Please contact NVC Lighting Technology Corporation for detailed information.

